

BAYVIEW

B I N A A



UNIT PLANS - TYPICAL



BINAA

BAYVIEW

BINAA

ONE BEDROOM TYPE 01

SUITE AREA 62.30 sqm

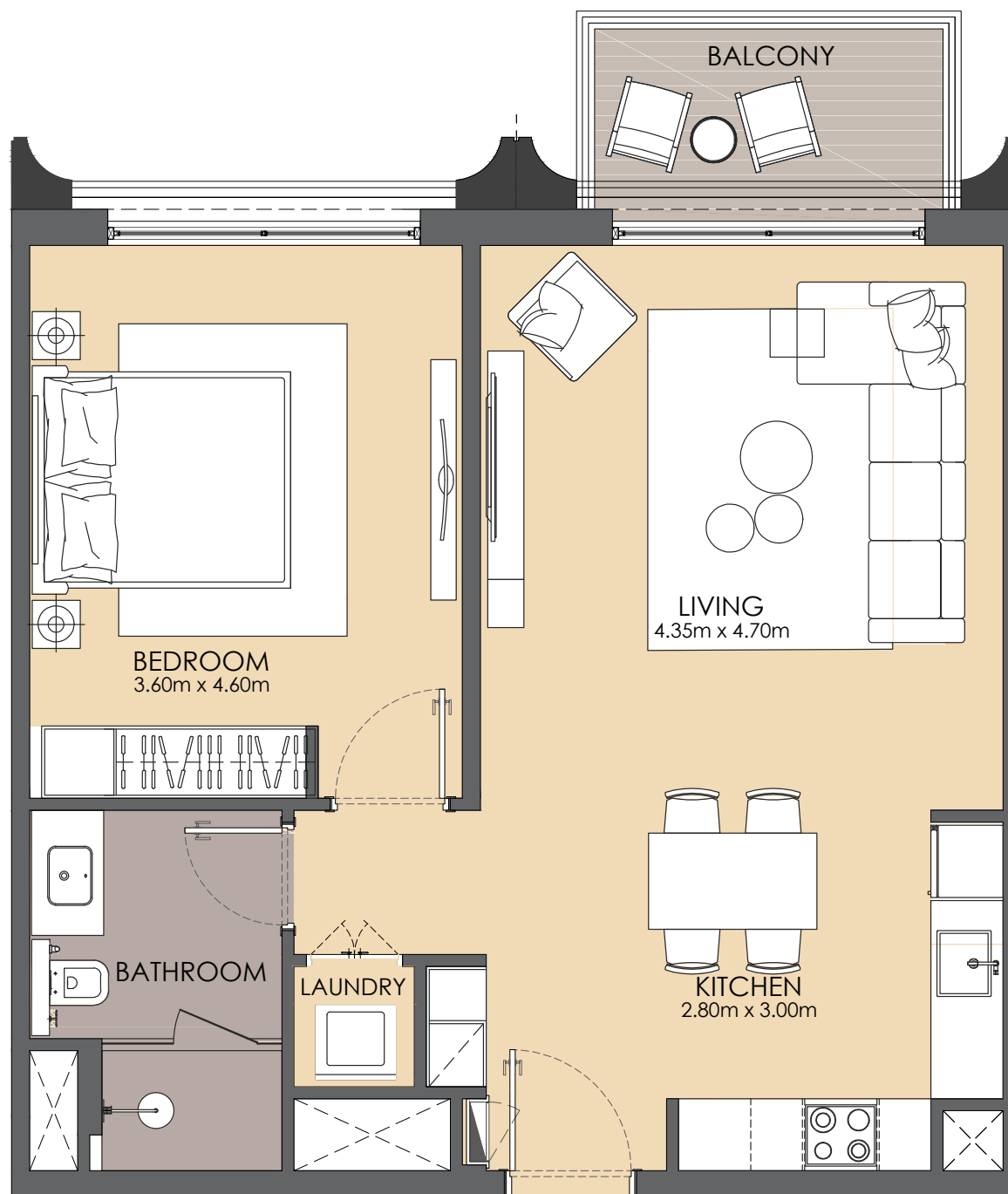
BALCONY AREA 5.20 sqm

TOTAL AREA 67.50 sqm



■ DISPLAYED FLOOR PLAN

■ MIRRORED FLOOR PLAN



Disclaimer: 1. All room dimensions are measured to structural elements and exclude all finishes and construction tolerances. 2. All materials, dimensions, symbols, and characters indicated on the plans are indicative. 3. The attached plans are for marketing purposes only. Actual suite area may vary from the stated area. Drawings not to scale. The developer reserves the right to make revisions. 4. The areas specified in this unit plan have been calculated based on Bahrain Property Measurement system (BPMS), in general as per the following standards: Inside face of all bounding walls, all centerline of any party walls to adjoining units, excluding the ducts and shafts containing shared building services (refers to Sales and Purchase Agreement). 5. The Unit Site Plan has been prepared for the purpose of identifying the areas of the Unit calculated in accordance with the methodology in note (5). These areas may or may not correspond with any methodologies adopted by the relevant authorities. 6. The units are measured at typical floor in the building. Columns may vary in size depending on the floor level.



BINAA

BAYVIEW

BINAA

TWO BEDROOM TYPE 01-A

SUITE AREA 94.00 sqm

BALCONY AREA 10.40 sqm

TOTAL AREA 104.40 sqm



- DISPLAYED FLOOR PLAN
- MIRRORED FLOOR PLAN

Disclaimer: 1. All room dimensions are measured to structural elements and exclude all finishes and construction tolerances. 2. All materials, dimensions, symbols, and characters indicated on the plans are indicative. 3. The attached plans are for marketing purposes only. Actual suite area may vary from the stated area. Drawings not to scale. The developer reserves the right to make revisions. 4. The areas specified in this unit plan have been calculated based on Bahrain Property Measurement system (BPMS), in general as per the following standards: Inside face of all bounding walls, all centerline of any party walls to adjoining units, excluding the ducts and shafts containing shared building services (refers to Sales and Purchase Agreement). 5. The Unit Site Plan has been prepared for the purpose of identifying the areas of the Unit calculated in accordance with the methodology in note (5). These areas may or may not correspond with any methodologies adopted by the relevant authorities. 6. The units are measured at typical floor in the building. Columns may vary in size depending on the floor level.



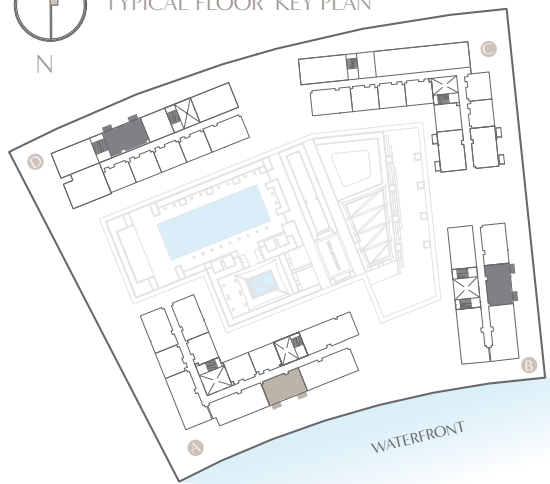
BINAA

BAYVIEW

B I N A A

TWO BEDROOM TYPE 01-B

SUITE AREA	96.00 sqm
BALCONY AREA	9.00 sqm
TOTAL AREA	105.00 sqm



- DISPLAYED FLOOR PLAN
- MIRRORED FLOOR PLAN

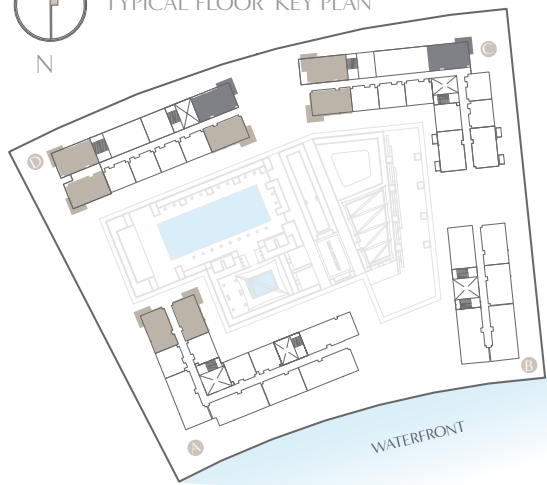
Disclaimer: 1. All room dimensions are measured to structural elements and exclude all finishes and construction tolerances. 2. All materials, dimensions, symbols, and characters indicated on the plans are indicative. 3. The attached plans are for marketing purposes only. Actual suite area may vary from the stated area. Drawings not to scale. The developer reserves the right to make revisions. 4. The areas specified in this unit plan have been calculated based on Bahrain Property Measurement system (BPMS), in general as per the following standards: Inside face of all bounding walls, all centerline of any party walls to adjoining units, excluding the ducts and shafts containing shared building services (refers to Sales and Purchase Agreement). 5. The Unit Site Plan has been prepared for the purpose of identifying the areas of the Unit calculated in accordance with the methodology in note (5). These areas may or may not correspond with any methodologies adopted by the relevant authorities. 6. The units are measured at typical floor in the building. Columns may vary in size depending on the floor level.

BAYVIEW

BINAA

TWO BEDROOM TYPE 02

SUITE AREA	95.00 sqm
BALCONY AREA	16.00 sqm
TOTAL AREA	111.00 sqm



- DISPLAYED FLOOR PLAN
- MIRRORED FLOOR PLAN

Disclaimer: 1. All room dimensions are measured to structural elements and exclude all finishes and construction tolerances. 2. All materials, dimensions, symbols, and characters indicated on the plans are indicative. 3. The attached plans are for marketing purposes only. Actual suite area may vary from the stated area. Drawings not to scale. The developer reserves the right to make revisions. 4. The areas specified in this unit plan have been calculated based on Bahrain Property Measurement system (BPMS), in general as per the following standards: Inside face of all bounding walls, all centerline of any party walls to adjoining units, excluding the ducts and shafts containing shared building services (refers to Sales and Purchase Agreement). 5. The Unit Site Plan has been prepared for the purpose of identifying the areas of the Unit calculated in accordance with the methodology in note (5). These areas may or may not correspond with any methodologies adopted by the relevant authorities. 6. The units are measured at typical floor in the building. Columns may vary in size depending on the floor level.



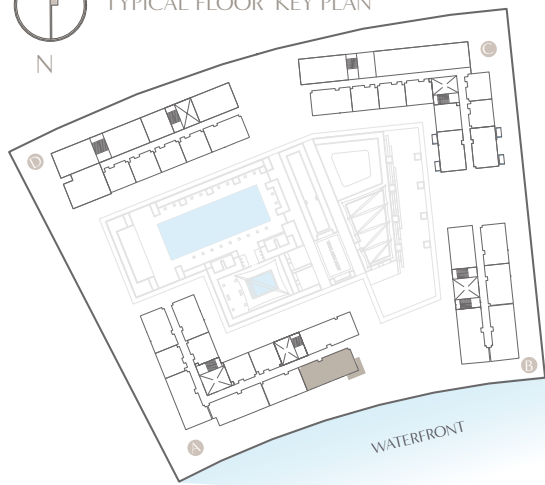
BINAA

BAYVIEW

BINAA

THREE BEDROOM TYPE 01-B

SUITE AREA	129.00 sqm
BALCONY AREA	17.00 sqm
TOTAL AREA	146.00 sqm



- DISPLAYED FLOOR PLAN
- MIRRORED FLOOR PLAN

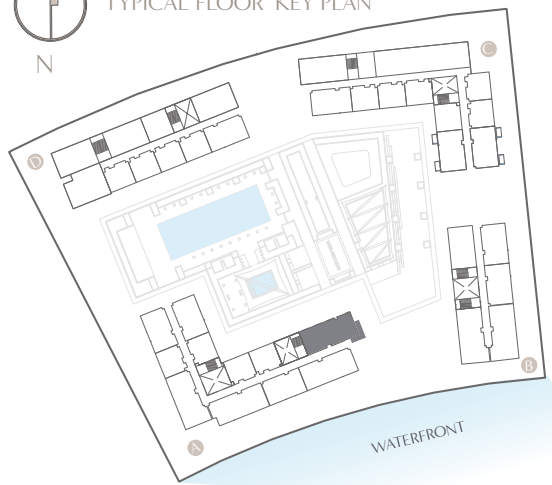
Disclaimer: 1. All room dimensions are measured to structural elements and exclude all finishes and construction tolerances. 2. All materials, dimensions, symbols, and characters indicated on the plans are indicative. 3. The attached plans are for marketing purposes only. Actual suite area may vary from the stated area. Drawings not to scale. The developer reserves the right to make revisions. 4. The areas specified in this unit plan have been calculated based on Bahrain Property Measurement system (BPMS), in general as per the following standards: Inside face of all bounding walls, all centerline of any party walls to adjoining units, excluding the ducts and shafts containing shared building services (refers to Sales and Purchase Agreement). 5. The Unit Site Plan has been prepared for the purpose of identifying the areas of the Unit calculated in accordance with the methodology in note (5). These areas may or may not correspond with any methodologies adopted by the relevant authorities. 6. The units are measured at typical floor in the building. Columns may vary in size depending on the floor level.

BAYVIEW

BINAA

THREE BEDROOM TYPE 02

SUITE AREA	127.40 sqm
BALCONY AREA	16.00 sqm
TOTAL AREA	143.40 sqm



- DISPLAYED FLOOR PLAN
- MIRRORED FLOOR PLAN

Disclaimer: 1. All room dimensions are measured to structural elements and exclude all finishes and construction tolerances. 2. All materials, dimensions, symbols, and characters indicated on the plans are indicative. 3. The attached plans are for marketing purposes only. Actual suite area may vary from the stated area. Drawings not to scale. The developer reserves the right to make revisions. 4. The areas specified in this unit plan have been calculated based on Bahrain Property Measurement system (BPMS), in general as per the following standards: Inside face of all bounding walls, all centerline of any party walls to adjoining units, excluding the ducts and shafts containing shared building services (refers to Sales and Purchase Agreement). 5. The Unit Site Plan has been prepared for the purpose of identifying the areas of the Unit calculated in accordance with the methodology in note (5). These areas may or may not correspond with any methodologies adopted by the relevant authorities. 6. The units are measured at typical floor in the building. Columns may vary in size depending on the floor level.



BINAA

BAYVIEW

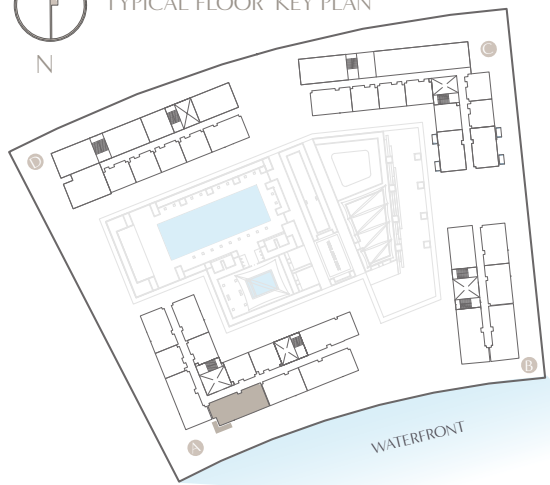
BINAA

THREE BEDROOM TYPE 03

SUITE AREA 132.40 sqm

BALCONY AREA 13.00 sqm

TOTAL AREA 145.40 sqm



- DISPLAYED FLOOR PLAN
- MIRRORED FLOOR PLAN

Disclaimer: 1. All room dimensions are measured to structural elements and exclude all finishes and construction tolerances. 2. All materials, dimensions, symbols, and characters indicated on the plans are indicative. 3. The attached plans are for marketing purposes only. Actual suite area may vary from the stated area. Drawings not to scale. The developer reserves the right to make revisions. 4. The areas specified in this unit plan have been calculated based on Bahrain Property Measurement system (BPMS), in general as per the following standards: Inside face of all bounding walls, all centerline of any party walls to adjoining units, excluding the ducts and shafts containing shared building services (refers to Sales and Purchase Agreement). 5. The Unit Site Plan has been prepared for the purpose of identifying the areas of the Unit calculated in accordance with the methodology in note (5). These areas may or may not correspond with any methodologies adopted by the relevant authorities. 6. The units are measured at typical floor in the building. Columns may vary in size depending on the floor level.



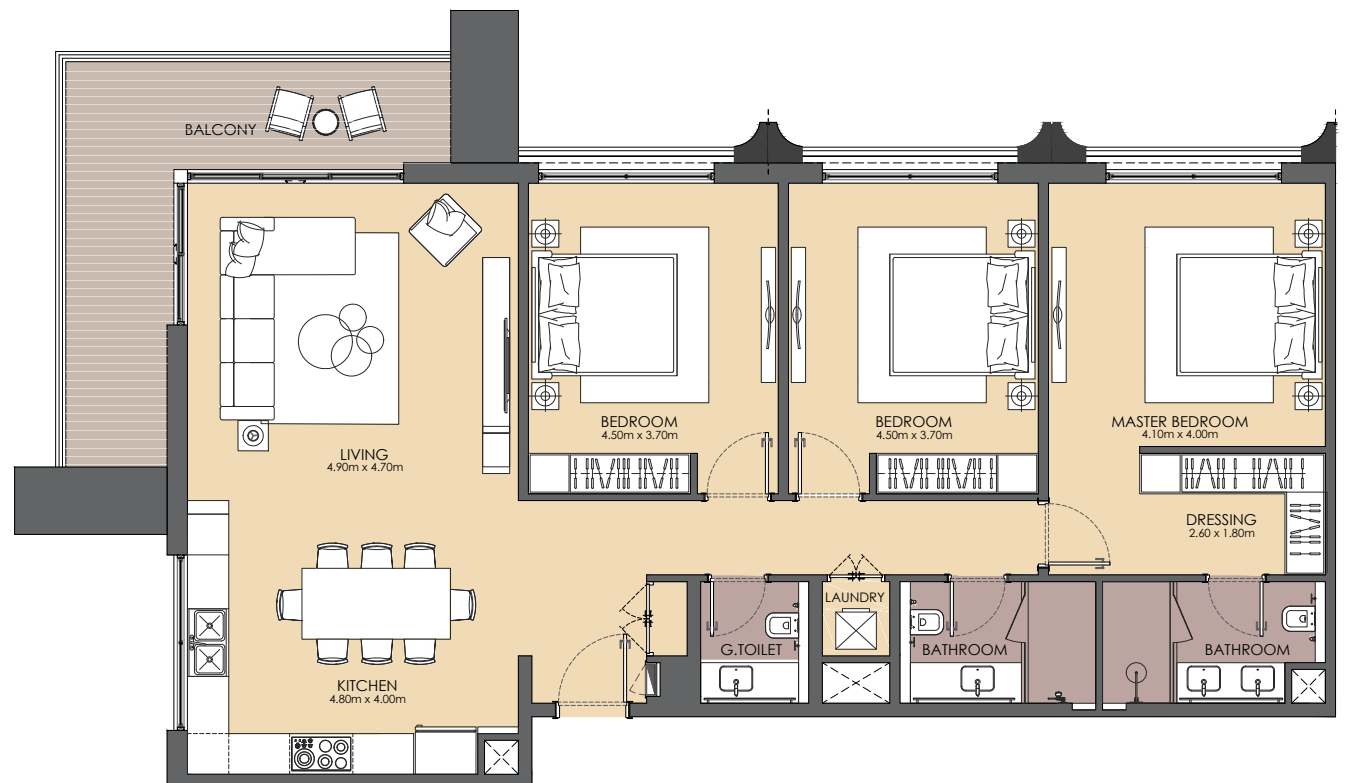
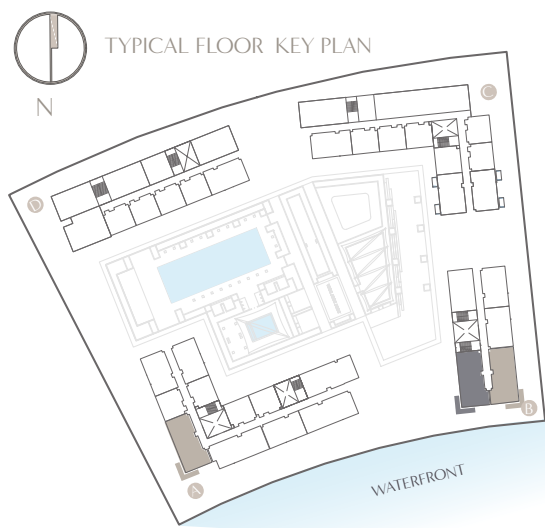
BINAA

BAYVIEW

BINAA

THREE BEDROOM TYPE 04

SUITE AREA	135.00 sqm
BALCONY AREA	18.00 sqm
TOTAL AREA	153.00 sqm



- DISPLAYED FLOOR PLAN
- MIRRORED FLOOR PLAN

Disclaimer: 1. All room dimensions are measured to structural elements and exclude all finishes and construction tolerances. 2. All materials, dimensions, symbols, and characters indicated on the plans are indicative. 3. The attached plans are for marketing purposes only. Actual suite area may vary from the stated area. Drawings not to scale. The developer reserves the right to make revisions. 4. The areas specified in this unit plan have been calculated based on Bahrain Property Measurement system (BPMS), in general as per the following standards: Inside face of all bounding walls, all centerline of any party walls to adjoining units, excluding the ducts and shafts containing shared building services (refers to Sales and Purchase Agreement). 5. The Unit Site Plan has been prepared for the purpose of identifying the areas of the Unit calculated in accordance with the methodology in note (5). These areas may or may not correspond with any methodologies adopted by the relevant authorities. 6. The units are measured at typical floor in the building. Columns may vary in size depending on the floor level.

UNIT MIX

Unit Description	Range Total Areas (sqm)	Car Park	No of Units
1 bedroom	67-90 sqm	1	205
2 bedroom	105-150 sqm	2	203
3 bedroom	139-367 sqm	2	76



LEGEND

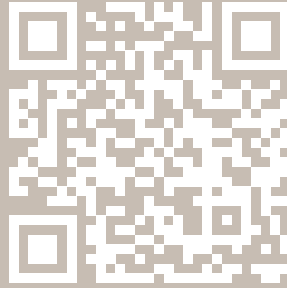
- 1 BEDROOM
- 2 BEDROOM
- 3 BEDROOM

KEY PLAN



BAYVIEW

B I N A A



بناء  BINAA

BINAA.COM

info@binaa.com, T: +973 7789 0010

Manama, Kingdom of Bahrain

Toll Free: 800 98888 | International: +973 7 789 0020



Kingdom of Bahrain مملكة البحرين
مؤسسة التنظيم العقاري
Real Estate Regulatory Authority



D2025/03/1026